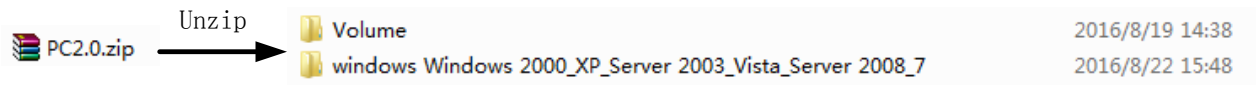


Principal Computer V2.0 User Manual

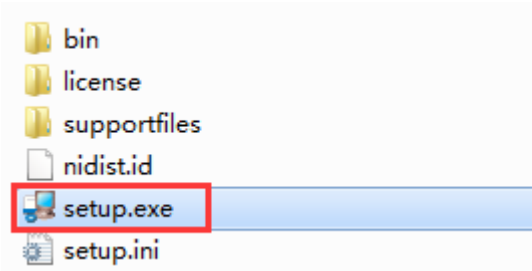
1) Control interface	7
2) Parameter Interface	9
3) Oscilloscope Interface	13

1. Software Installation

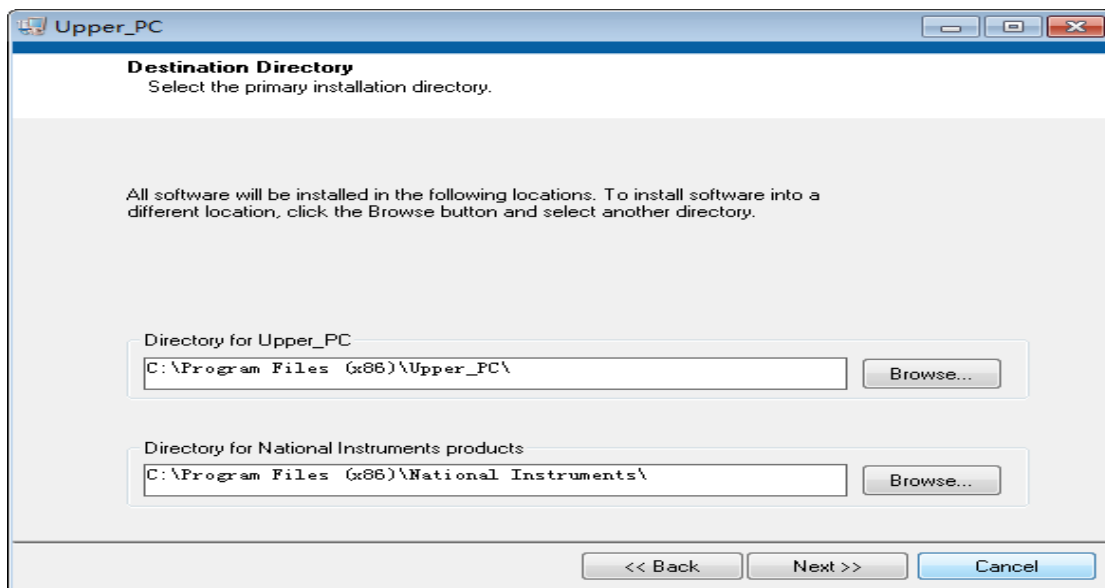
1) Decompress Zip file.



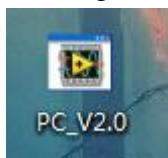
2) Enter “Volume” and find the “setup.exe”, then click to install.



3) Choose the file install path, click next till installation finished.



4) Program shortcut can be found in the desktop after installation completed.



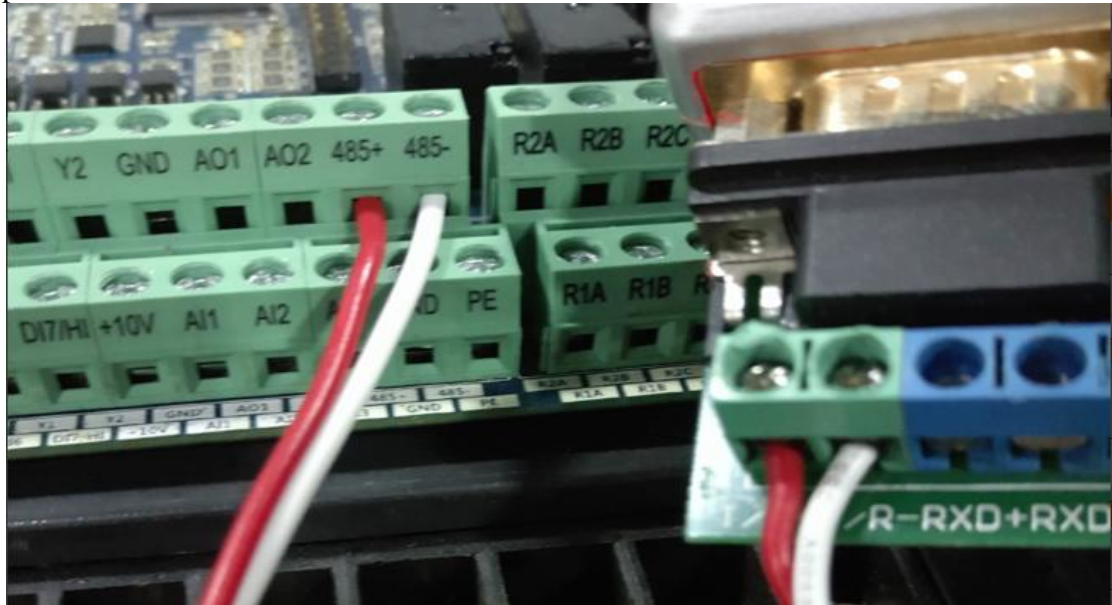
2. Software Usage

1) This Principal Computer monitoring software is developed based on MODBUS 485 communication protocol. A USB to 485 transverter and a serial port driver software are required to realize the communication between PC and the frequency inverter.

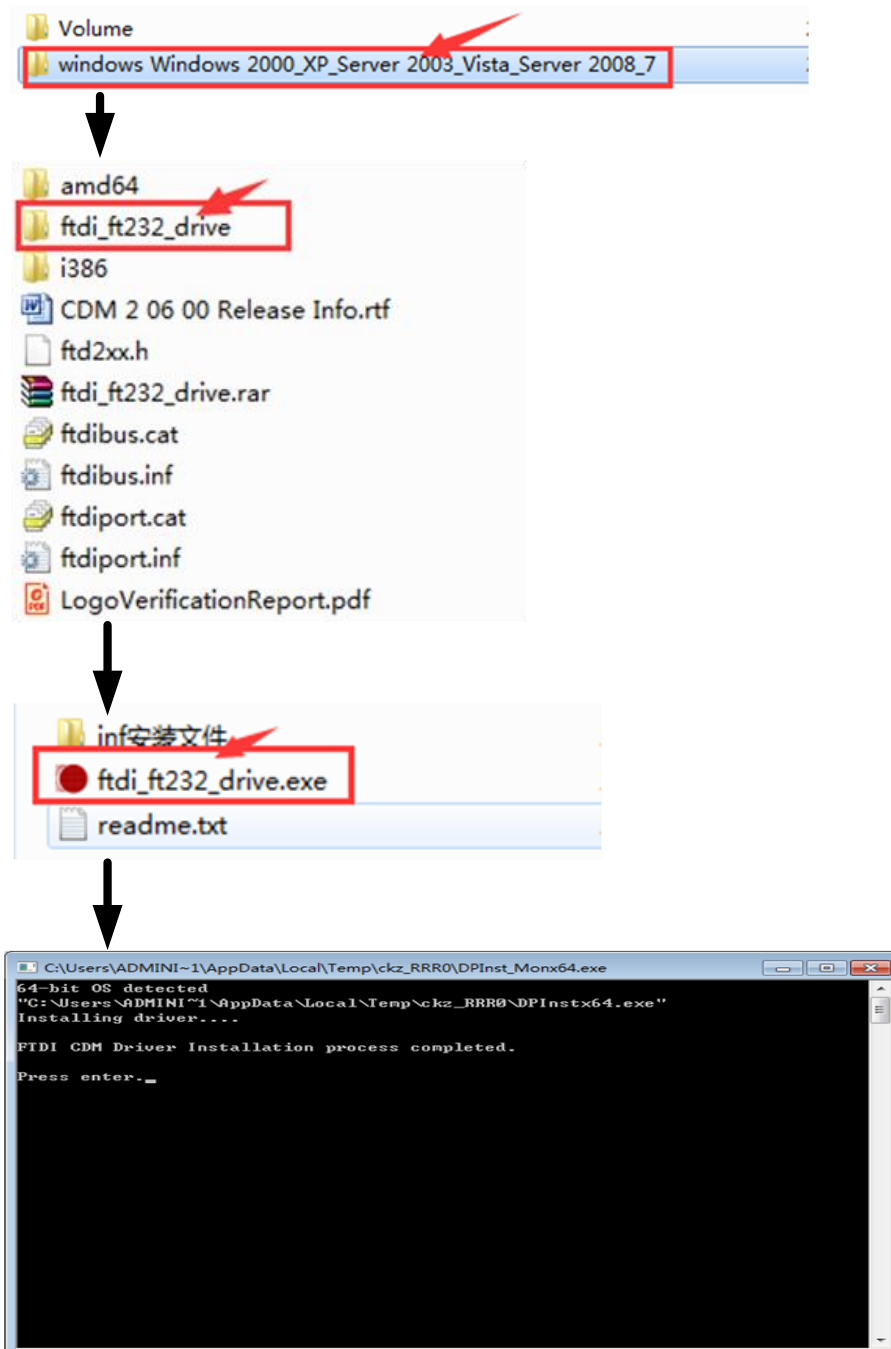
—USB to serial port transverter wiring with frequency inverter



T/R+ connect 485+ T/R- connect 485- GND connect GND USB connect PC USB port

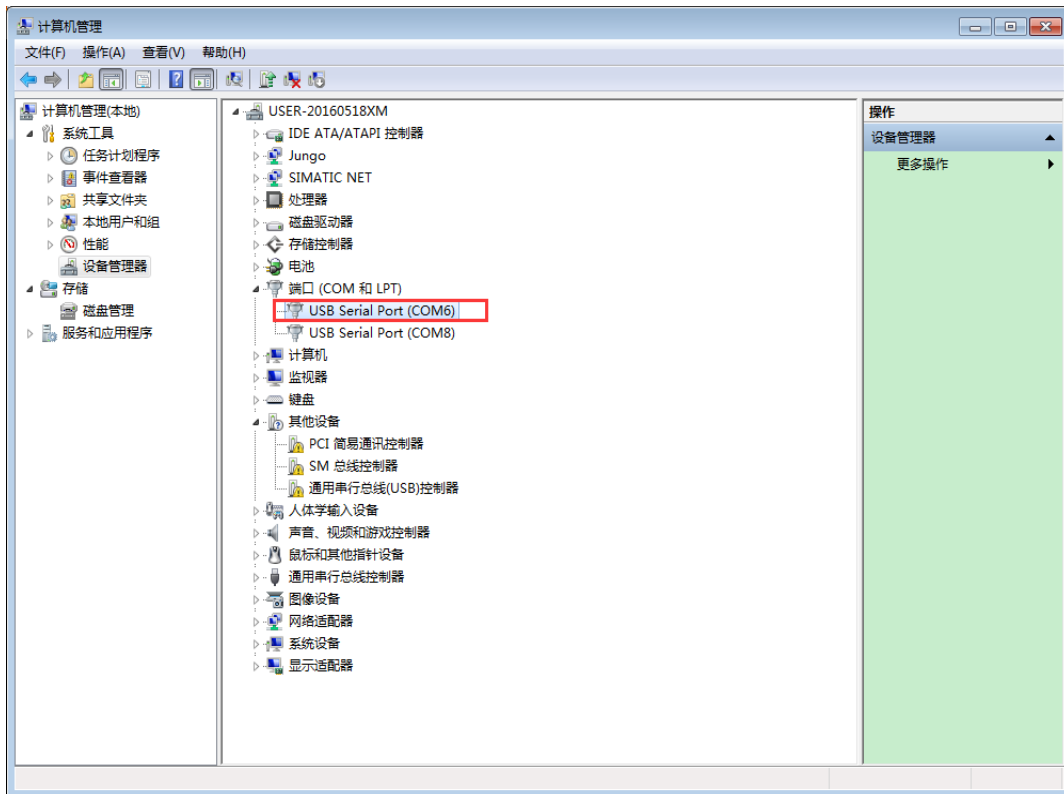


2) Install USB to 485 drive program, click sequentially the files that red arrows pointed.

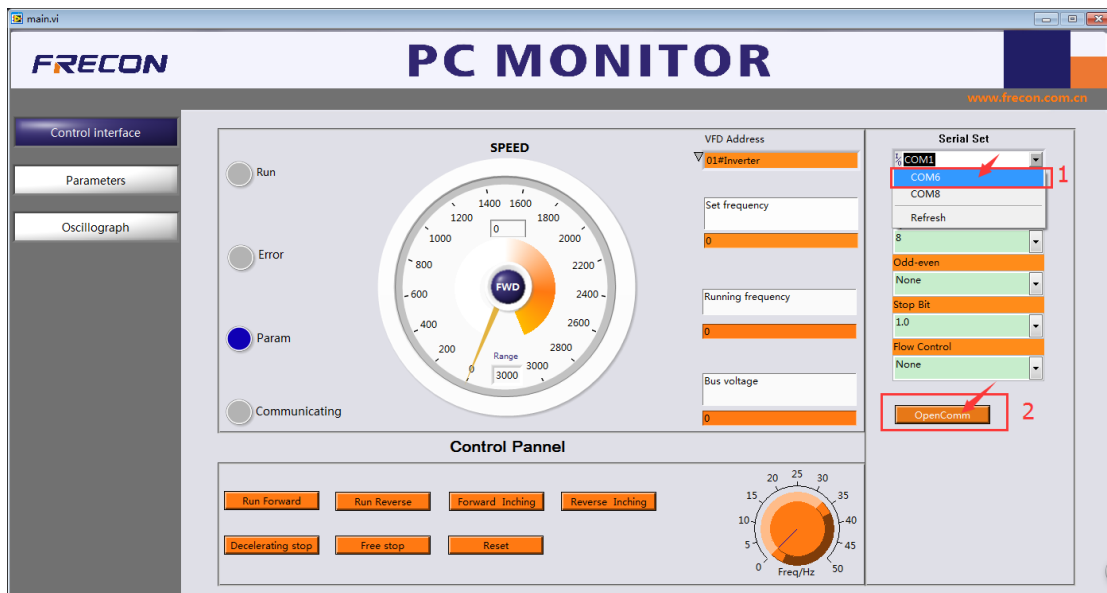


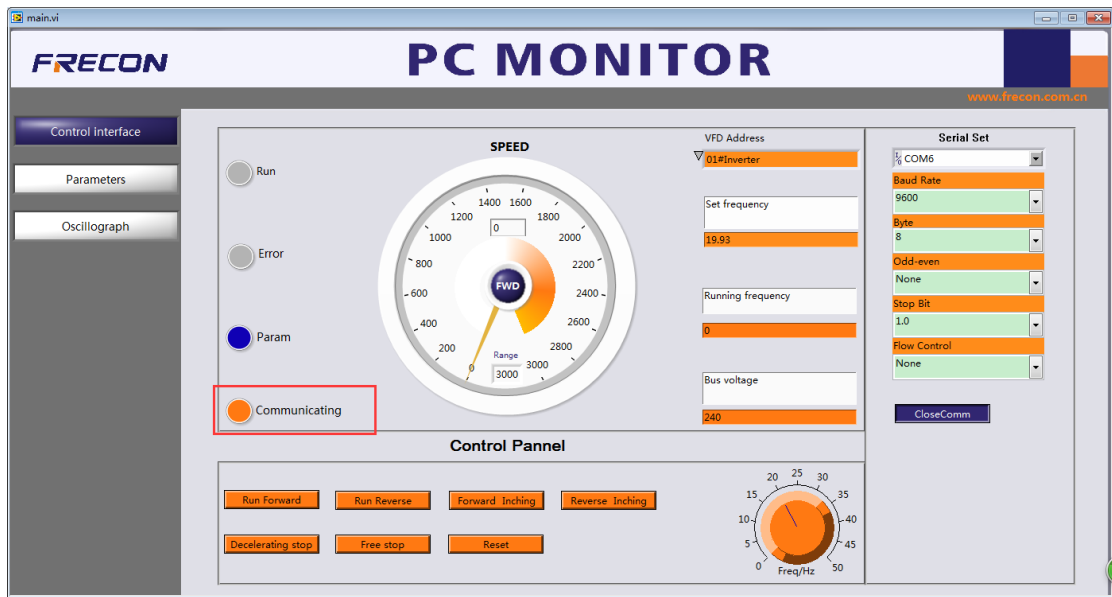
Press Enter

3) Insert the converter to USB port and check its corresponding COM port, currently the COM port is COM6.



4) Open the monitoring software, set communication port as COM6->Click OpenComm.

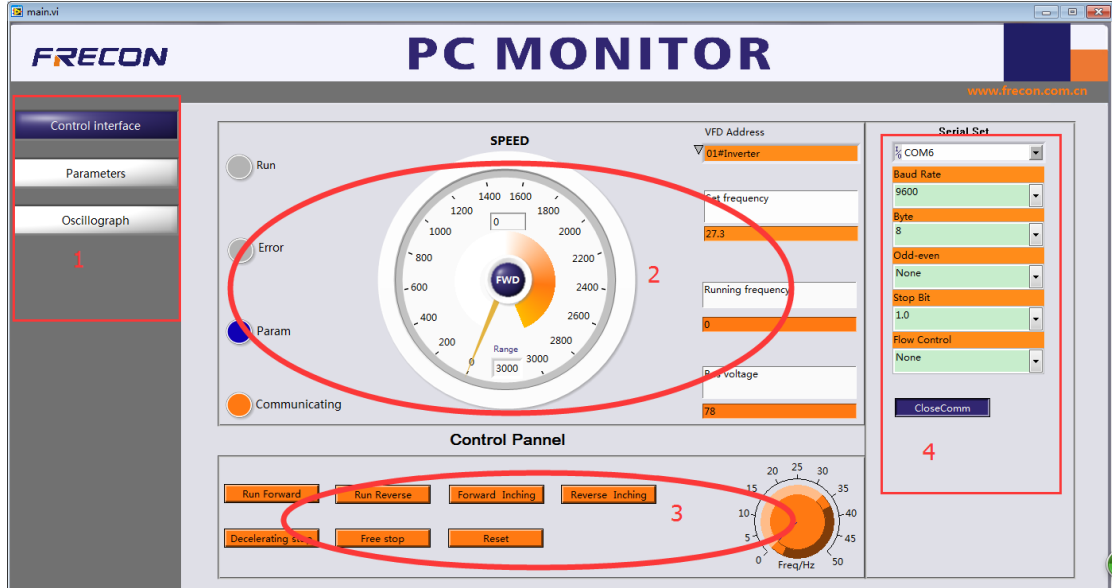




**If successfully communicated, the signal lamp (communicating) lights.

3. Operation Instructions

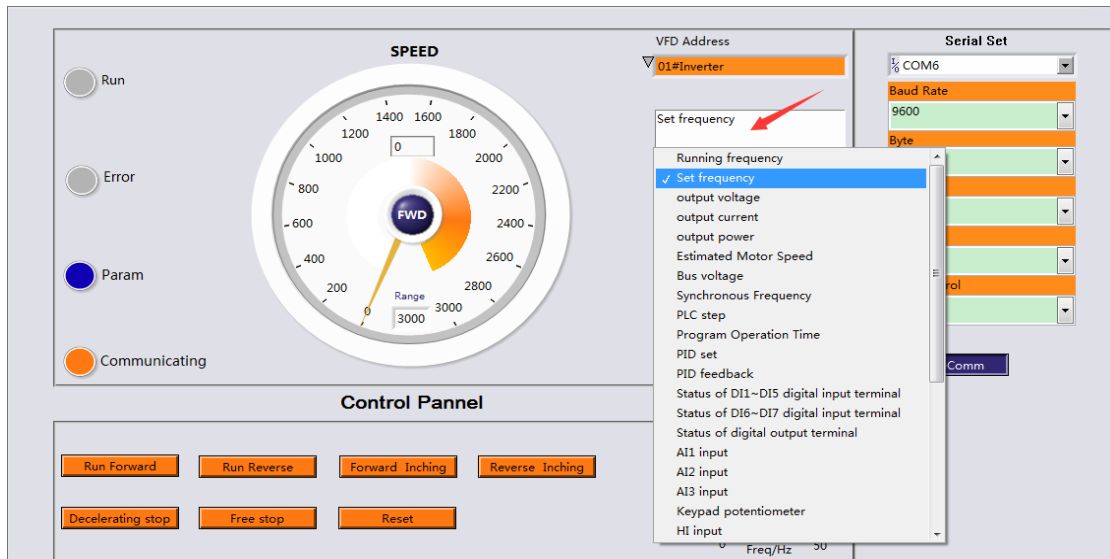
1) Control interface



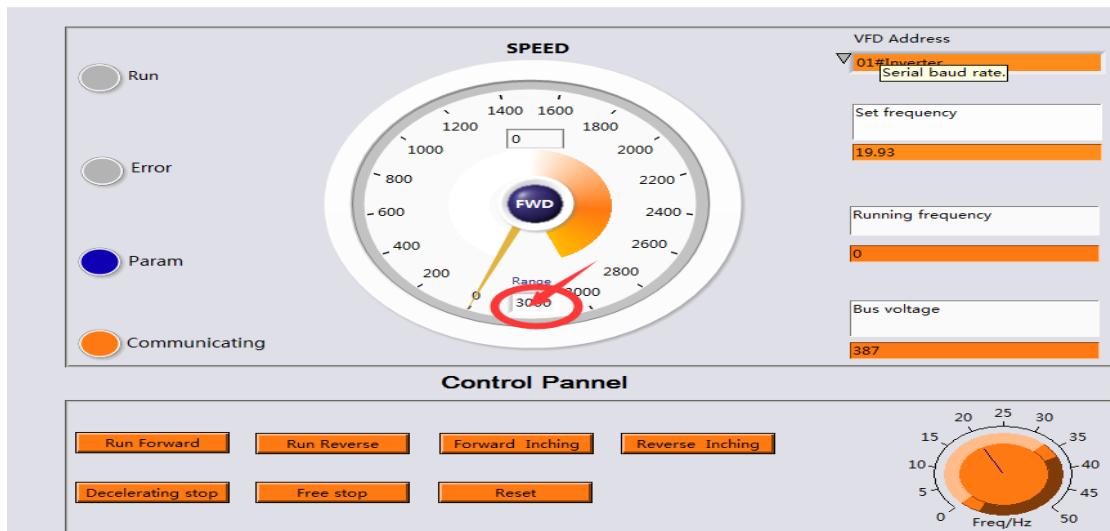
*Zone Description

- a) Zone one: Button for interface switch
- b) Zone two: Parameter monitoring zone

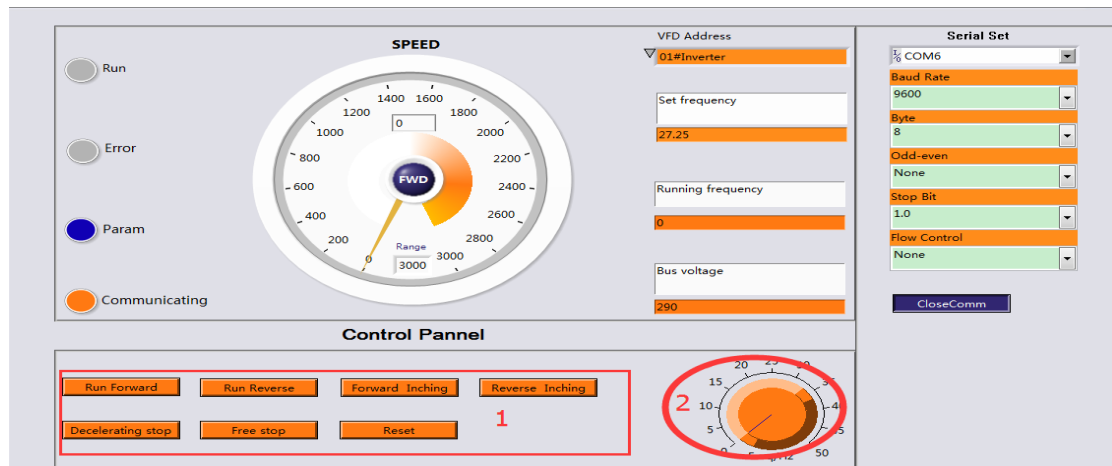
Clicking the location where red arrow pointed could select parameters to monitor, as shown below.



In the location where red arrow pointed, the range of speed could be modified, as shown below.



c) Zone three: Control panel

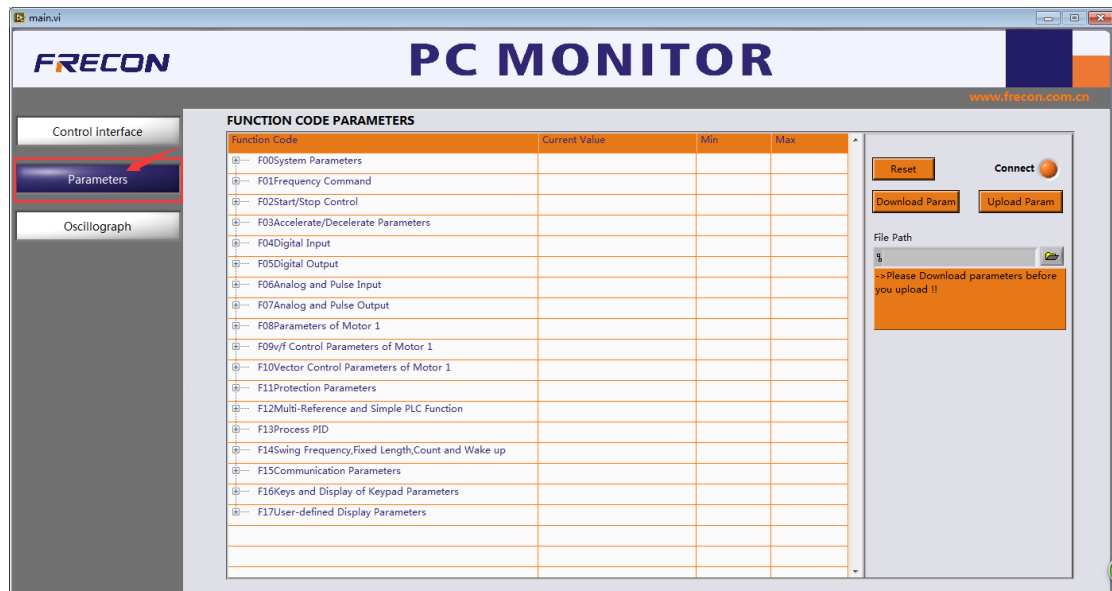


Above: 1-----Control (run/stop/reset)

2-----Frequency given knob (the frequency given mode is communication given: F01.01 = 3)

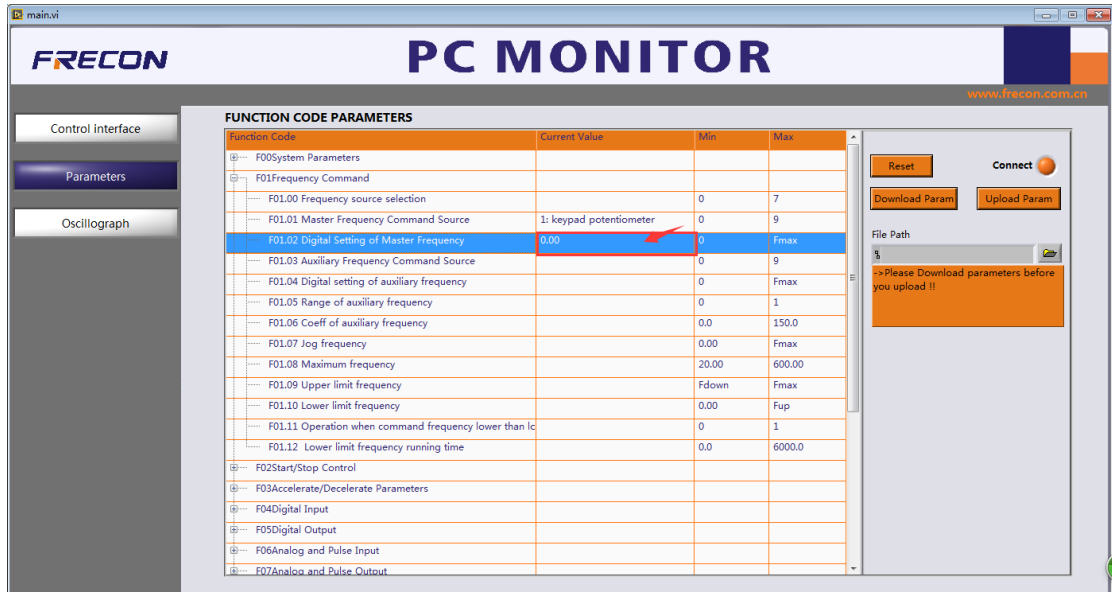
d) Zone four: Port communicating parameter area

2) Parameter Interface

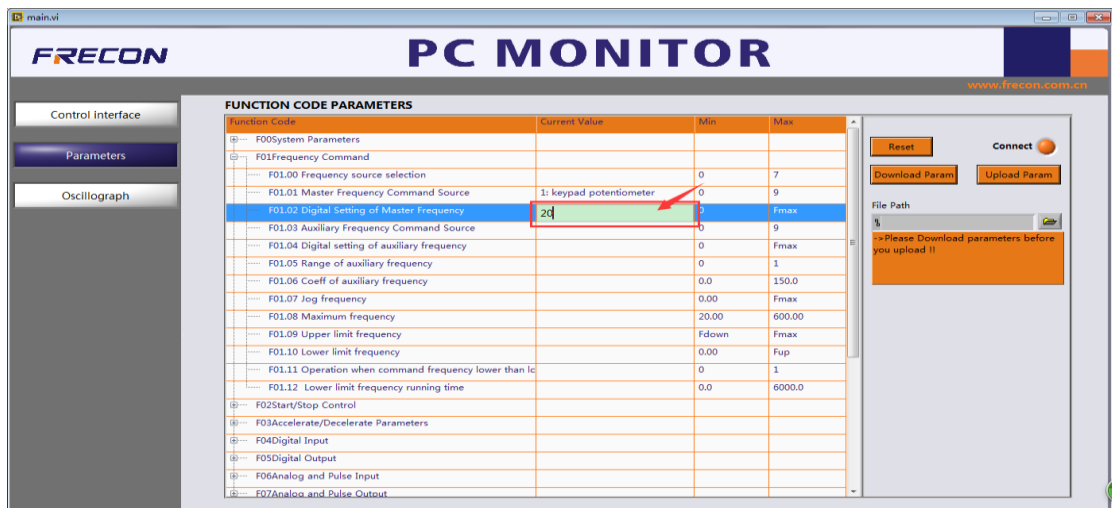


a)Parameter modification(e.g. change digital frequency given F01.02)

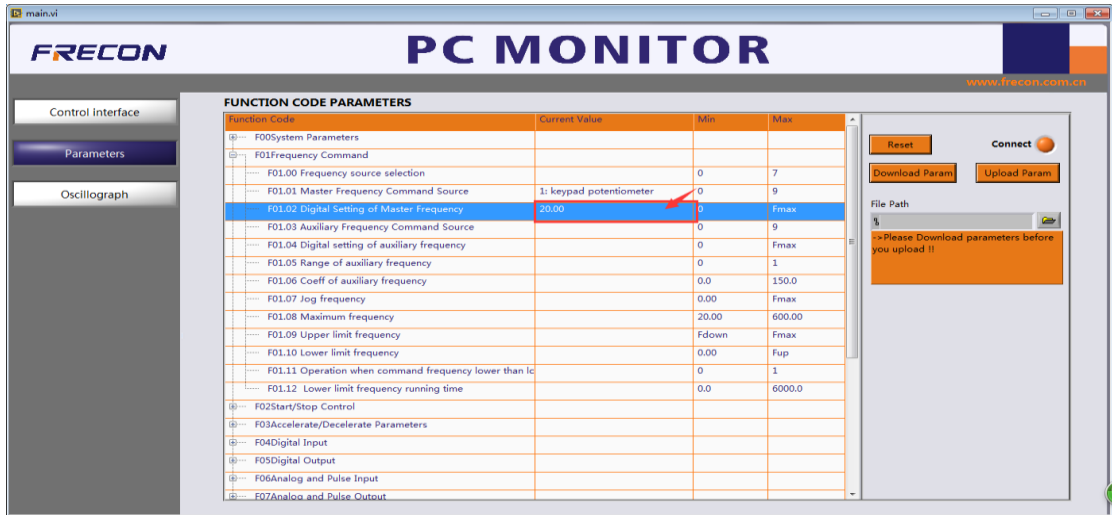
Left click where the red arrow points can check the current value of this function code.



Click again will popup a input box, then input a value (e.g. 20) and click blank, the setting finished.

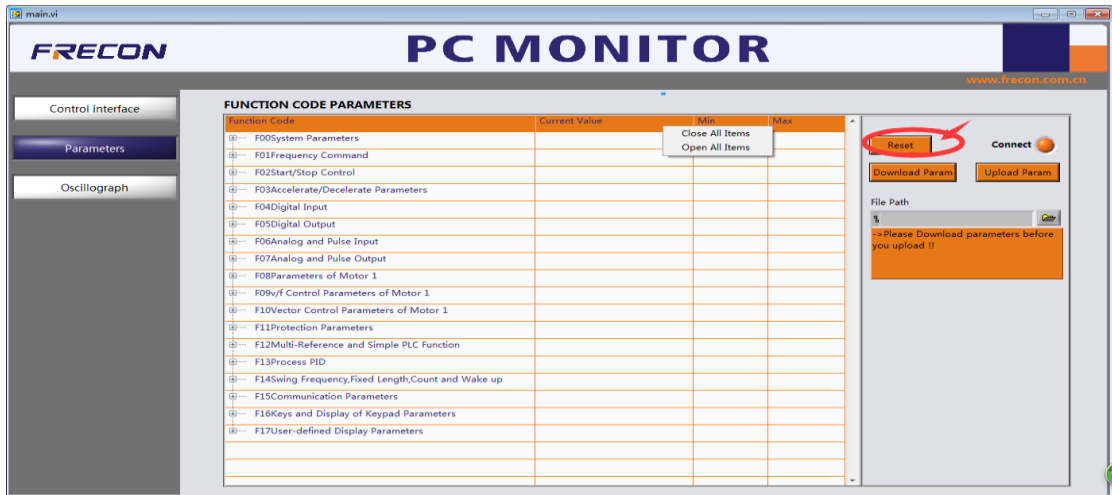


The current value has been modified to 20.



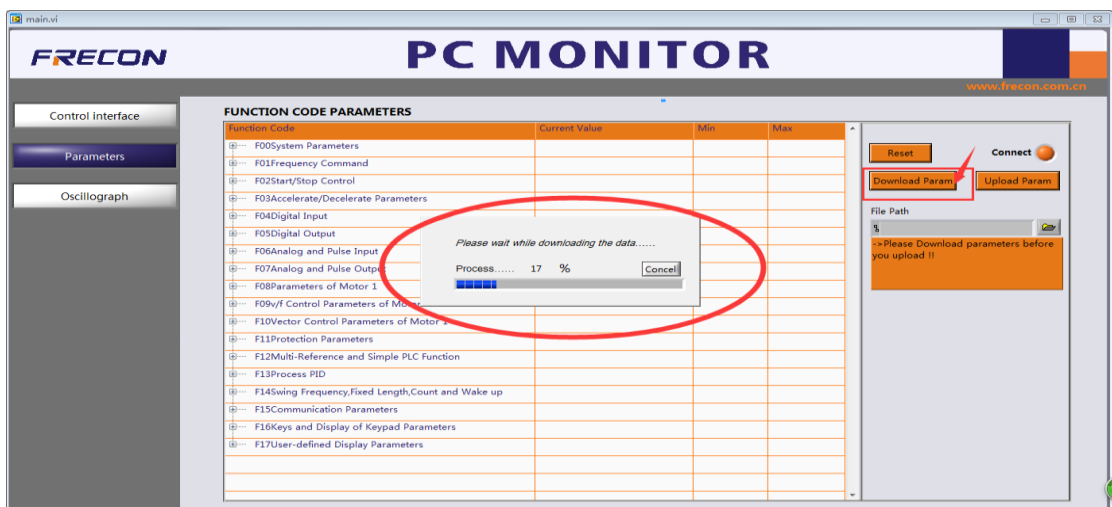
Other parameters modify by example.

b) Click reset button, all the function codes showing reset

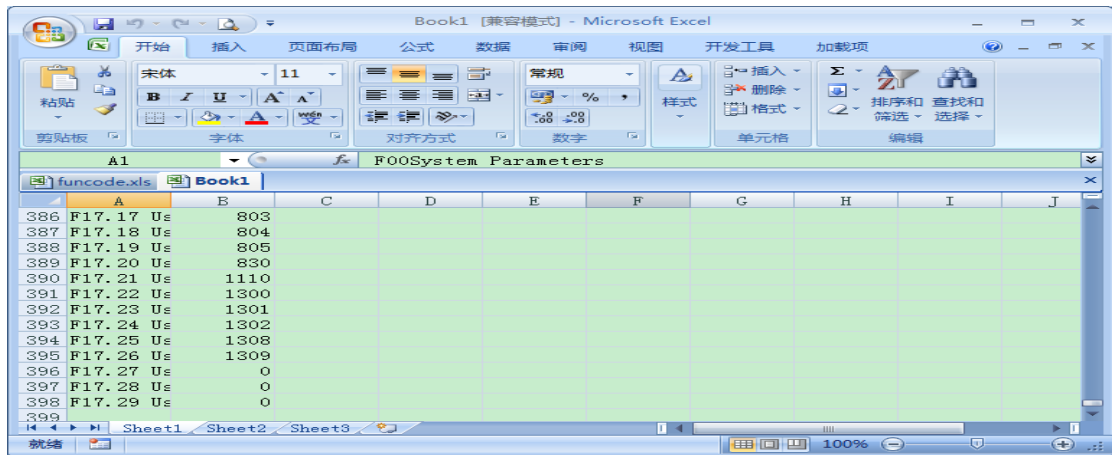


c) Download parameters: Download inverter's parameter to computer

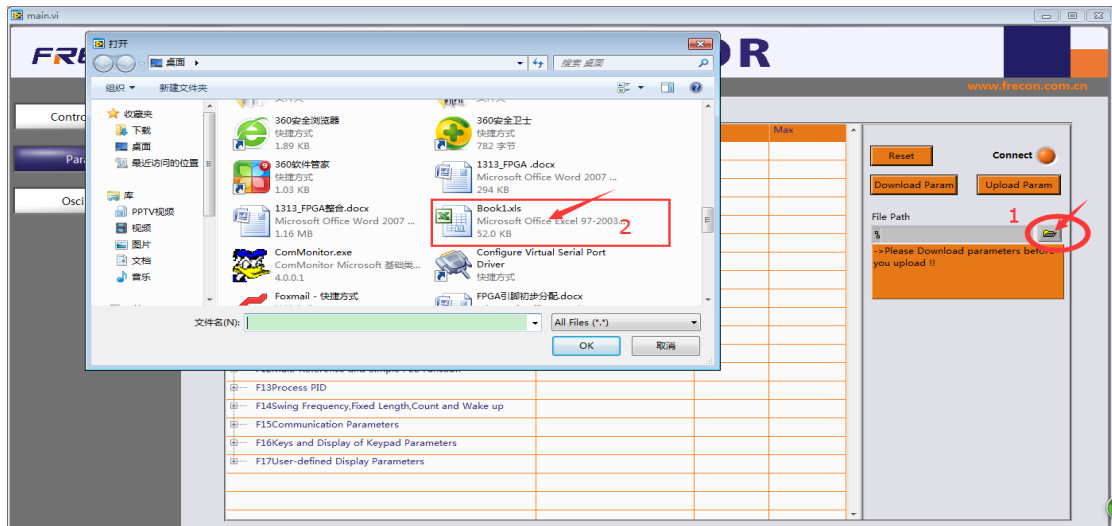
Click the location where the red arrow points as shown below.



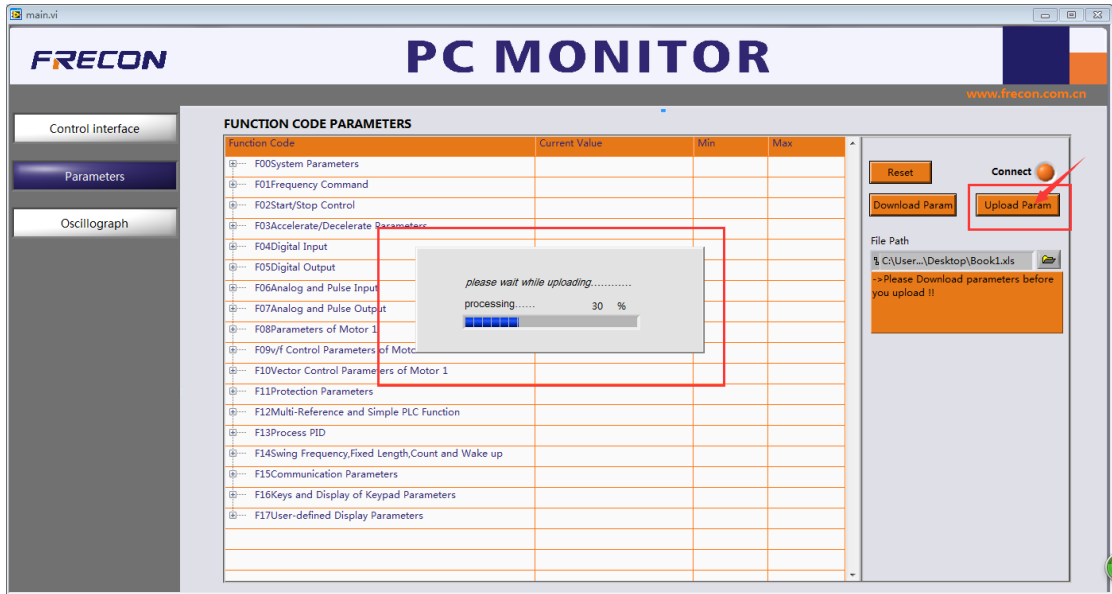
An excel file (that is, parameter save file) will popup automatically after download completed, then click to save (book1).



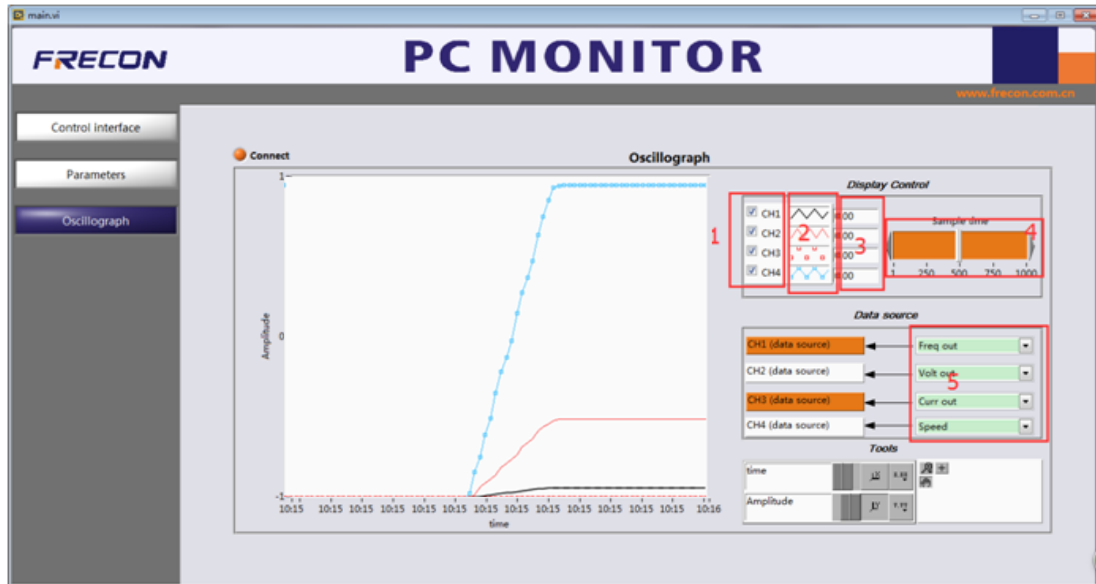
d) Upload parameters: Click file selection button to find the file (book1) that saved before



Click upload param to start uploading, attention this action is irrevocable.



3) Oscilloscope Interface



*Marking instruction: 1——Channel selection

2——Oscillogram selection

3——Current param of each channel

4——Sampling time

5——Each channel monitoring items selection